

Name of Work :- CONSTRUCTION OF 1/1500 M.T. CAP.WH ANCILLARY WORKS AT GUT  
NO.196/A/1,GAGLEGAON TQ.BILOLI DIST.NANDED

## ESTIMATE

DIVISION :-  
SANCTIONED ESTIMATE :- 15948000  
FUND HEAD :-  
MAJOR HEAD :-  
MINOR HEAD :-  
SERVICE HEAD :-  
DEPARTMENTAL HEAD :-

Name of Work :- CONSTRUCTION OF 1/1500 M.T. CAP.WH ANCILLARY WORKS AT GUT  
NO.196/A/1,GAGLEGAON TQ.BILOLI DIST.NANDED

Administrative Approved under

No. Dated 15948000

Technical sanction under

No. Dated 15948000

Estimated prepared by :- Er. K.V.Amrutwad

And checked by :-

!Call or Authority!

  
**K.V.AMRUTWAD**  
Regd.Consulting Engineer  
R.No.State/R/2022/APL/00733

Name of Work :- CONSTRUCTION OF 1/1500 M.T. CAP.WH ANCILLARY WORKS AT GUT  
NO.196/A/1,GAGLEGAON TQ.BILOLI DIST.NANDED

## RECPITULATION SHEET

(A) COST OF Civil WORK	Rs.	11578269
(B) Cost of Electrification		1273610
(C) Royalty charges		152988
(D) Material testing charges		28615
TOTAL	Rs.	13033482
(E) Add 18% GST	Rs.	2346027
(F) Add 0.5% Insurance	Rs.	57891
(G) Add Contigencies		510600
TOTAL	Rs.	15948000

  
**K.V.AMBUTWAD**  
Regd.Consulting Engineer  
R.No.State/R/2022/APL/00733

**Name of Work :- CONSTRUCTION OF 1/1500 M.T. CAP. WH ANCILLARY WORKS AT GUT NO.196/A/1,GALILEGAON TQ.BILOLI DIST.NANDED**

**ABSTRACT SHEET**

Sr. No.	Item Description	Quantity	Unit	Item.No./ Page.No.	Basic Rate	Lead Charges		Lifts & RA	Total Rate	Add 0% Corporation area	Total of Rates 6 to 11	Add 0% for charges	Total of rates 6 to 14	Amount
						Sand/HM	Metal/Brick							
1	2	3	4	5	6	7	8	10	11	12	13	14	15	16
1	Excavation for foundation in earth, soils of all types, sand gravel and soft murum, including the removing the excavate material up to a distance of 50 meter beyond the building area preparing the bed for the foundation and necessary back filling ramming watering (including shoring and strutting etc complete life up to 1.50metre)	244.19	Cum	21.02/148	207.00				207.00		207.00		207.00	50547.74
2	Excavation for foundation in earth, soils of all types, sand,gravel and soft murum, including removing the excavated material upto a distance of 50 metres beyond the building area and stacking and spreading as directed, dewatering, preparing the bed for the foundation and necessary back filling, ramming, watering including shoring and strutting etc. complete. (Lift from 1.5m to 3.0m) By	0.00	Cum	21.04/148	258.00				258.00		258.00		258.00	0.00
3	Excavation for foundation in hard murum including removing the excavated material upto distance of 50 metres beyond the building area and stacking and spreading as directed, dewatering, preparing the bed for the foundation and necessary back filling, ramming, watering including shoring and strutting etc. complete. (Lift upto 1.50 m) By Mechanical Means	37.16	Cum	21.06/148	227.00				227.00		227.00		227.00	8436.23
4	Excavation for foundation in Hard murum including removing the excavated material upto a distance of 50 metres beyond the building area and stacking and spreading as directed, dewatering, preparing the bed for the foundation and necessary back filling, ramming, watering including shoring and strutting etc complete (Lift from 1.5 to 3.0m.)	0.00	Cum	21.08/148	284.00		0.00		284.00		284.00		284.00	0.00
5	Excavation for foundation in hard murum and boulders including removing the excavated material up to a distance 50 metres, beyond the building area and stacking and spreading as directed, dewatering, preparing the bed for the foundation and necessary back filling, ramming, watering including shoring and strutting etc. complete. (Lift	23.23	Cum	21.10/148	252.00				252.00		252.00		252.00	5853.33

Sr. No.	Item Description	Quantity	Unit	Item.No./p.No.	Basic Rate	Lead Charges	Lifts & RA	Total Rate	Add 0% Corporation Area	Total of Rates 6 to 11	Add 0% for charges	Total of rates 6 to 14	Amount
6	Excavation for foundation in Hard murum and boulders including removing the excavated material upto a distance of 50 metres, beyond the building area and stacking and spreading as directed, dewatering, preparing the bed for the foundation and necessary back filling, ramming, watering including shoring and strutting etc. complete. (Lift from 1.5 m to 3.0 m.) By Mechanical Means	0.00	Cum	21.12/148	312.00			312.00		312.00		312.00	0.00
7	Excavation for roadway in earth, soil of all sorts, sand, gravel or soft murum including dressing section to the required grade, camber and side slopes and conveying the excavated materials with all lifts upto a lead of 50m. and spreading for embankment or stacking as directed.	116.70	Cum	2.11/27	119.00			119.00		119.00		119.00	13887.69
8	Excavation for roadway in hard murum and boulder including dressing section to the required grade, camber and side slopes and conveying the excavated materials with all lifts upto a lead of 50m. and spreading for embankment or stacking as directed.		Cum	2.13/27	139.00			139.00		139.00		139.00	0.00
					Less for SCADA								
9	Providing and laying Cast in situ/Ready Mix concrete in M-10 of trap/ granite/ quartzite/ gneiss metal for foundation and bedding including bailing out water, Steel centering, formwork, laying/pumping, compacting, roughening them if special finish is to be provided, finishing if required and curing complete, with fully automatic micro processor based PLC with SCADA enabled reversible Drum Type mixer/concrete Batch mix plant (Pan mixer) etc. complete. With fine aggregate (Crushed sand VSI Grade)	89.12	Cum	24.01/169	5830.00	546.85	-126.00	6250.85		6250.85		6250.85	557072.93
10	Providing uncoursed rubble masonry of trap / granite / quartzite / gneiss stones in cement mortar 1:6 in foundation and plinth of inner walls / in plinth of external walls including bailing out water manually , striking joints on un exposed faces and watering etc.complete.	19.85	cum	28.01/191	5025.00			5025.00		5025.00		5025.00	99721.13
11	Providing second class Burnt Brick masonry with conventional/ I.S. type bricks in cement mortar 1:6 in foundations and plinth of inner walls/ in plinth external walls including bailing out water manually , striking joints on unexposed faces, raking out joints on exposed faces and watering etc. Complete.	64.65	CM	27.01/189	7755.00			7755.00		7755.00		7755.00	501391.46
12	Providing & laying 35 cm wide single layer tarfet by applying initial coat of shalibond @ 1 kg /sqm fixing in place by wire nails for DPC at plinth as directed by engineer incharge	34.45	Sqm	R.A.	349.25			349.25		349.25		349.25	12030.61

Sr. No.	Item Description	Quantity	Unit	Item.No./ Te.No.	Basic Rate	Lead Charges	Lifts & RA	Total Rate	Add 0% Corporation area	Total of Rates 6 to 11	Add 0% for charges	Total of rates 6 to 14	Amount
13	Providing and fixing in position TMT - FE - 500 bar reinforcement of various diameters for R.C.C. pile caps, footings, foundations, slabs, beams columns, canopies, staircase, newels, chajjas, lintels pardis, copings, fins, arches etc. as per detailed designs, drawings and schedules. including cutting, bending, hooking the bars, binding with wires or tack welding and	10.00	M.T.	26.33/182	89703.00			89703.00		89703.00		89703.00	897030.00
14	Providing and laying in situ /Ready Mix cement concrete M-20 of trap / granite /quartzite/ gneiss metal for R.C.C. work in foundations like raft, strip foundations, grillage and footings of R.C.C. columns and steel stanchions etc. including bailing out water, Steel centering formwork, laying/pumping cover blocks, compaction and curing/roughening the surface if special finish is	18.38	cum	25.11/172	1098.00	623.77	-126.00	1595.77		1595.77		1595.77	29337.80
15	Providing and laying in situ /Ready Mix cement concrete M-20 of trap / granite /quartzite/ gneiss metal for R.C.C. work in foundations like raft, strip foundations, grillage and footings of R.C.C. columns and steel stanchions etc. including bailing out water, Steel centering formwork, laying/pumping cover blocks, compaction and curing/roughening the surface if special finish is to be provided (Excluding reinforcement and structural steel) etc. complete, with fully automatic micro processor based PLC with SCADA enabled reversible Drum Type mixer/ concrete Batch mix plant (Pan mixer) etc. complete. With fine aggregate	23.45	cum	25.31/173	13783.00	623.77	-126.00	14280.77		14280.77		14280.77	334826.93
16	Providing and laying Cast in situ/Ready Mix cement concrete M-20 of trap / granite /quartzite/ gneiss metal for R.C.C. beams and lintels as per detailed designs and drawings or as directed including steel centering, formwork, cover blocks, laying/pumping, compaction and roughening the surface if special finish is to be provided and curing etc. complete. (Excluding reinforcement and structural steel). with fully automatic micro processor based PLC with SCADA enabled reversible Drum Type mixer/ concrete Batch mix plant (Pan mixer) etc. complete. With fine aggregate (Crushed sand VSLGrade)	74.49	cum	25.50/175	12269.00	623.77	-126.00	12766.77		12766.77		12766.77	950979.08

Sr. No.	Item Description	Quantity	Unit	Item.No./e.No.	Basic Rate	Lead Charges	Lifts & RA	Total Rate	Add 0% Corporation Area	Total of Rates 6 to 11	Add 0% for charges	Total of rates 6 to 14	Amount
17	Providing and laying Cast in situ/Ready Mixcement concrete M-20 of trap/ granite/ quartzite/ gneiss metal for R.C.C. chajja as per detailed design and drawings including steel centering, formwork, cover blocks, laying/pumping, compacting and roughening the surface if special finish is to be provided and curing complete. (Excluding reinforcement and structural steel). with fully automatic micro processor based PLC with SCADA enabled reversible Drum Type mixer/ concrete Batch mix plant (Pan mixer) etc. complete. With fine aggregate.(Crushed sand VSI Grade)	3.98	cum	26.05/178	13932.00	623.77	-126.00	14429.77		14429.77		14429.77	57401.63
18	Providing and laying Cast in situ/Ready Mix cement concrete M-20 of trap/ granite / quartzite/ gneiss metal for R.C.C. slabs and landings as per detailed designs and drawings including steel centering, formwork, cover blocks, laying/pumping, compaction finishing the formed surfaces with cement mortar 1:3 of sufficient minimum thickness to give a smooth and even surface or roughening if special finish is to be provided and curing etc. complete.(Excluding reinforcement and structural steel).with fully automatic micro processor based PLC with SCADA enabled reversible Drum Type mixer/ concrete Batch mix plant (Pan mixer) etc. complete. With fine aggregate.(Crushed sand VSI Grade)	4.68	Cum	25.7/176	14116.00	623.77	-126.00	14613.77		14613.77		14613.77	68392.44
19	Providing second class Burnt Brick masonry with conventional/ I.S. type bricks in cement mortar 1:6 in superstructure including striking joints, raking out joints, watering and scaffolding etc. Complete	259.63	cum	27.05	7994.00			7994.00		7994.00		7994.00	2075511.00
20	Providing and laying Cast in situ/Ready Mix cement concrete M-15 of trap/ granite/quartzite/gneiss metal for coping to plinth or parapet, moulded or chamfered as per drawing or as directed including steel centering, plywood/ steel formwork compacting, roughening them if special finish is to be provided, finishing uneven and honeycombed surface and curing etc. complete. The Cement Mortar 1:3 plaster is considered for rendering uneven and honeycombed surface only. Newly laid concrete shall be covered by gunny bag, plastic, tarpaulin etc. (Wooden centering will not be allowed.) With fine aggregate (Crushed sand VSI	1.14	Cum	24.16/171	6359.00		-126.00	6233.00		6233.00		6233.00	7120.58

Sr. No.	Item Description	Quantity	Unit	Item No./ F.d.No.	Basic Rate	Lead Charges	Lifts & RA	Total Rate	Add 0% Corporation Area	Total of Rates 6 to 11	Add 0% for charges	Total of rates 6 to 14	Amount
21	Providing sand faced plaster externally in cement mortar using approved screened sand, in all positions including base coat of 15 mm thick in cement mortar 1:4 using waterproofing compound at 1Kilogramper cement bag curing the same for not less than 2 days and keeping the surface of the base coat rough to receive the sand faced treatment 6 to 8 mm thick in cement mortar 1:4 finishing the surface by taking out	1060.47	Sqm	32.11/201	639.00	10.14		649.14		649.14		649.14	688396.27
22	Providing internal cement plaster 20mm thick in Single coats in cement mortar 1:4 without neeru finish, to concrete, brick surface, in all positions including scaffolding and curing etc.complete.	634.50	Sqm	32.07/201	382.00	10.14		392.14		392.14		392.14	248812.44
23	Providing internal cement plaster 20mm thick in Single coats in cement mortar 1:4 with neeru finish, to concrete, brick surface, in all positions including scaffolding and curing etc.complete.	229.22	Sqm	32.21/202	382.00	10.14		392.14		392.14		392.14	89884.37
24	Providing internal cement plaster 12mm thick in single coat in cement mortar 1:4 without neeru finish to concrete or brick surfaces, in all positions including scaffolding and curing etc. complete	64.98	Sqm	32.04/201	278.00	10.14		288.14		288.14		288.14	18724.42
25	Providing and applying white-wash in two coats on old / new plastered or masonry surfaces and asbestos cement sheets including scaffolding and preparing the surface by brushing and brooming down etc. complete	621.75	Sqm	36.03/218	12.00			12.00		12.00		12.00	7460.94
26	Providing and applying two coats of exterior acrylic emulsion paint confirming to corresponding I.S. of approved manufacture and of approved colour to the plastered surfaces including cleaning ,preparing the plaster surface, applying primer coat ,scaffolding if necessary , and watering the surface for two days etc complete	685.00	Sqm	35.25/217	261.00			261.00		261.00		261.00	178784.87
27	Providing and applying two coats (exterior quality) of flat oil paint of approved colour and shade to the plastered surface in buildings and workshops including scaffolding if necessary, cleaning the surface and preparing surface etc. complete. (excluding primer coat)	125.00	Sqm	35.11/216	88.00			88.00		88.00		88.00	10999.56

Sr. No.	Item Description	Quantity	Unit	Item No./ Sub.No.	Basic Rate	Lead Charges	Lifts & RA	Total Rate	Add 0% Corporation area	Total of Rates 6 to 11	Add 0% for charges	Total of rates 6 to 14	Amount
28	Providing and fixing rolling shutter fabricated from steel laths of minimum thickness 0.9 mm with lock plate of 3.15 mm thickness reinforced with 35 x 35 x 5 mm angle section fitted with sliding bolts and handles for both sides, deep M.S. channel section of depth and thickness not less than 65 mm and 3.15 mm respectively with hold fast arrangements, M.S. Bracket plate 300 x 300 x 3.15 mm minimum size and shape with square bar, suspension shaft of minimum 32 mm diameter, hood cover of M.S. sheet not less than 0.9 mm thickness and of any size at top and safety devices including mechanical gear operation arrangement consisting of worm gear wheels and worms of high grade cast iron or mild steel and one coat of red lead primer etc. complete. (I.S. 62481979)	21.00	Sqm	39.24/238	4829.00			4829.00		4829.00		4829.00	101409.00
29	Providing and fixing M.S. grill door 24 Kilogram/Square Metre of various size as per detailed drawings without hot dip coating, iron fixtures and fastenings and 3 coats of oil painting etc	38.58	Sqm	39.31/239	3258.00			3258.00		3258.00		3258.00	125693.64
30	Providing structural steel work in trusses, other similar trussed purins and members with all bracing, gusset plates etc. as per detailed designs and drawings or as directed including cutting, fabricating, hoisting, erecting fixing in position, Making	19.27	M.T.	23.04/167	119459.00			119459.00		119459.00		119459.00	2301927.15
31	Providing and fixing colour coated Zinalume ( R ) AZ150 ( min 150 gms/sq.mt. total on each side ) profiled sheets for roofing. The feed material is manufactured out of nominal 0.45 mm Base Metal Thickness ( BMT ) ( 0.5 mm TCT ), Hi-strength steel with min.550 MPa yield strength, metallic hot dip coated with Aluminium-Zinc alloy ( 55% aluminium 43.4% zinc 1.6% silicon ) with COLORBOND ( R ) steel quality super durable polyester paint coat ( with inorganic pigment). The paint shall have a total coating thickness of nominal 35 um, comprising of nominal 25 um exterior coat on top surface and nominal 10 um reverse coat on back surface. Profile sheet shall have nom. 950-1050 mm effective cover width and nominal 25-30 mm deep ribs with subtle square fluting in the five pan at nominal 180-250 mm center- to-center. The end rib shall be designed for anti-capillary groove. and return leg. The feed material should have coil manufacturers product details marked a regular interval. Including fasteners with min. fastened with min. 25 um Zinc-Tin alloy coated, Hex head, self-drilling screw etc. complete. (weight of profile 4.52 Kilogram/Square Metre)	721.57	Sqm	38.34/227	1173.00			1173.00		1173.00		1173.00	846399.58

Sr. No.	Item Description	Quantity	Unit	Item No./ e.No.	Basic Rate	Lead Charges	Lifts & RA	Total R <sub>e</sub>	Add 0% Corporation area	Total of Rates 6 to 11	Add 0% for charges	Total of rates 6 to 14	Amount
32	Providing and fixing of colour coated Zincaluminium (R) AZ150 ( min 150 gms/sq.mt. total on each side ) profiled sheets for roofing. The feed material is manufactured out of nominal 0.45 mm Base Metal Thickness ( BMT ) ( 0.5 mm TCT ), Hi-strength steel with min.550 MPa yield strength, metallic hot dip coated withAluminium-Zinc alloy (55% aluminium 43.4% zinc 1.6% silicon) with COLORBOND ( R ) steel quality super durable polyester paint coat ( with inorganic pigment). The paint shall have a total coating thickness of nominal 35 mm, comprising of nominal 25mm exterior coat on top surface and nominal 10 um reverse coat on back surface. Profile sheet shall have nom. 950-1050 mm effective cover width and nominal 25-30 mm deep ribs with sublet square fluting in the five pan at nominal 180-250 mmcenter- to-center. The end rib shall be designed for anti-capacity groove. and return leg. The feed material should have coil manufacturers product details marked a regular interval, including fasteners with min. fastened with min. 25 um Zinc-Tin alloy coated, Hex head, self-drilling screw etc. complete. (weight of profile - 4.52)	42.50	rgm	38.35/228	751.00			751.00		751.00		751.00	31913.75
33	Providing and fixing wind operated tarbo SS ventilator system (24 inchdia.) over existing roof including cutting of sheet proper fixing in position to true line & leve lwith all fixture & fastening	12.00	no	42/457	8095.00			8095.00		8095.00		8095.00	97140.00
34	Providin & Fixing Parapet coping of size 35 by 35 cm in cement mortar 1 is to 4 with conical top and side drop and round finish at ac sheets joint including finishing the hole with 20mm thick cement plaster 1 is to 4 with cement finish	32.00	rmt	R.A.	1263.00			1263.00		1263.00		1263.00	40416.00
35	Filling in plinth and floors with approved excavated material in 15cm. to 20cm. layers including watering and compacting etc. complete.	164.33	cum	21.36/152	126.00			126.00		126.00		126.00	20704.95
36	providing hard murum cohesive non swelling material in plinth in layer of 20 cm etc completed as directed only compactor thickness is payable	257.69	cum	25/469	225.00			225.00		225.00		225.00	57979.82
37	Compacting the hard murum side widths including laying in layers on each side with vibratory roller including artificial watering etc. complete.	1182.24	Sqm	2.31/29	2.00			2.00		2.00		2.00	2364.48
38	Providing and laying stone metal layer of 20 CM thickness with 60mm oversize metal 65% and 40mm size metal 35% with sand or stone chips spreading and level in and backing completed	197.51	Cum	R.A.	876.61			876.61		876.61		876.61	173142.75

Sr. No.	Item Description	Quantity	Unit	Item No./ e.No.	Basic Rate	Lead Charges	Lifts & RA	Total Rf	Add 0% Corporation area	Total of Rates 6 to 11	Add 0% for charges	Total of rates 6 to 14	Amount
39	Compacting oversize and size metals layers combinedly with power roller not less than 8 terms including artificial watering and levelling it is completed as directed	1182.24	Sqm	MR	30.00			30.00		30.00		30.00	35467.20
40	Providing and laying in situ cement concrete M20 with tremix treatment for 100 mm thickness for flooring with groove cutting of 4mm wide and 20mm deep with necessary	624.75	Sqm	33.30/208	796.00			796.00		796.00		796.00	497301.00
41	Providing treatment after remix vacuum dewatering over preid cement concrete 1 is to 2 is to 4 surface including fixing of MS channel network as per required size and place of double rod vibrating the concrete by cutting 50 mm wire 6mm in cement concrete floor in etc complete as directed	624.75	Sqm	R.A.	51.00			51.00		51.00		51.00	31862.25
42	Providing groove cutting 50mm providing groove cutting 50 mm wire 6mm in cement concrete floor in etc complete as directed	0.00	Sqm	R.A.	35.00			35.00		35.00		35.00	0.00
43	Providing and fabricating structural steel work in rolled sections like joists, channels, angles, tees etc. as per detailed design and drawings or as directed including cutting, fabricating, hoisting, erecting, fixing in position making riveted / bolted /welded connections without connecting plates, braces etc. and including one coat of anticorrosive paint and over it two coats of oil painting of approved quality and shade etc.	0.48	m.T,	23.01/167	101844.00			101844.00		101844.00		101844.00	49227.32
44	Providing and fixing in position MS ladder of 45 CM width made of 50 by 50 by 6mm two angles for rails and Ms angle stiffness at three places as directed with MS round bars of 20mm diameter for steps at every 30cm Centre to Centre including fixing	8.00	rmt	R.A.	1003.91			1003.91		1003.91		1003.91	8031.28
45	Providing and fixing lightening conductor system comprising of erecting Air-Termination consisting of tubular copper rod of 25mm dia. 1.2 mm thick with multiple points head 1.2 mt. long ( Heavy Duty) welded or clamped to G.I. pipe pole B grade 50 mm dia of required length with M.S	1.00	no.	44.18/282	25784.00			25784.00		25784.00		25784.00	25784.00
46	Providing and fixing lightening conductor system comprising of erecting Air-Termination consisting of tubular copper rod of 25mm dia. 1.2 mm thick with multiple points head 1.2 mt. long ( Heavy Duty) welded or clamped to G.I. pipe pole B grade 50 mm dia of required length with M.S	0.00	cum	44.18/282	22189.00			22189.00		22189.00		22189.00	0.00
47	Providing and fixing lightening conductor system comprising of erecting Air-Termination consisting of tubular copper rod of 25mm dia. 1.2 mm thick with multiple points head 1.2 mt. long ( Heavy Duty) welded or clamped to G.I. pipe pole B grade 50 mm dia of required length with M.S Conveying material obtained from excavation including playing in layers breaking cloud dressing to the required line ka grade and section for all leads and lips from the site of excavation to the site of the position away from building as directed engine	1.00	cum	5km lead stat.	25784.00			25784.00		25784.00		25784.00	25784.00

Sr. No.	Item Description	Quantity	Unit	Item.No./ Ref.No.	Basic Rate	Lead Charges	Lifts & RA	Total Rate	Add 0% Corporation Area	Total of Rates 6 to 11	Add 0% for charges	Total of rates 6 to 14	Amount
48	Providing preconstruction antitermite treatment as per I.S. 6313 (Part-II) by treating the top surface of plinth filling at the rate of 5 litres of emulsion concentrate at 1.0 percent of chlorophyrisfos per square metre of surface area covering ten years guarantee on bond paper.	624.75	Sqm	21,24/150	108.00			108.00		108.00		108.00	67473.00
49	Providing and fixing in position powder coated aluminium louvered windows / ventilator of various sizes with powder coating as per detailed drawing and specifications including aluminium frames 80 x 38 mm x 1.22 mm box type, 5 mm thick sheet glass louvers, of approved quality etc. complete.	36.24	Sqm	39,68/241	3467.00			3467.00		3467.00		3467.00	125644.08
													11578268.69

  
**K.V. AMRUTWAD**  
 Regd Consulting Engineer  
 R.No.S.ate/R/2022/APL/00733

Name of Work :- CONSTRUCTION OF 1/1500 M.T. CAP.WH ANCILLARY WORKS AT GUT NO.196/A/1,GAGLEGAON TQ.BILOLI DIST.NANDED

MEASUREMENT SHEET

Sr. No.	Item Description	Nos			Length (M)	Breadth (M)	Height/ Dept. (M)	Quantity	Units			
		1	X	2								
1	Excavation for foundation in earth, soils of all types, sand gravel and soft murum, including the removing the excavate material up to a distance of 50 meter beyond the building area preparing the bed for the foundation and necessary back filling ramming watering (including shoring and strutting etc complete life up to 1.50metre)											
	Column C1	14	X	1	X	1.65	X	1.45	X	0.70	23.45	
	Column C3	4	X	1	X	1.80	X	1.80	X	0.70	9.07	
	Column C2 MIDDLE	0	X	2	X	1.65	X	1.45	X	0.70	0.00	
	Column C4 RS	0	X	7	X	0.00	X	0.00	X	0.70	0.00	
	Column Platform (CP)	0	X	2	X	1.30	X	1.30	X	0.70	0.00	
	For ground beam pannel											
	C1-C1 middle	14	X	1	X	2.80	X	0.65	X	0.70	17.84	
	C1-C3 end wall	4	X	1	X	2.63	X	0.65	X	0.70	4.79	
	C3-C2	0	X	2	X	3.75	X	0.65	X	0.70	0.00	
	C2-C2 M	0	X	2	X	3.65	X	0.65	X	0.70	0.00	
	Apron long	2	X	2	X	45.10	X	1.28	X	0.60	138.55	
	Apron Short	2	X	2	X	16.44	X	1.28	X	0.60	50.50	
	<b>Total</b>		X								<b>244.19</b>	<b>Cum</b>
2	Excavation for foundation in earth, soils of all types, sand,gravel and soft murum, including removing the excavated material upto a distance of 50 metres beyond the building area and stacking and spreading as directed, dewatering, preparing the bed for the foundation and necessary back filling, ramming, watering including shoring and strutting etc. complete. (Lift from 1.5m to 3.0m) By Mechanical Means											
	Column C1	14	X	1	X	1.65	X	1.45	X	0.00	0.00	
	Column C3	4	X	1	X	1.80	X	1.80	X	0.00	0.00	
	Column C2 MIDDLE	0	X	2	X	1.65	X	1.45	X	0.00	0.00	
	Column C4 RS	0	X	7	X	0.00	X	0.00	X	0.00	0.00	
	Column Platform (CP)	0	X	2	X	1.30	X	1.30	X	0.00	0.00	
	For ground beam pannel											
	C1-C1 middle	4	X	8	X	2.80	X	0.65	X	0.00	0.00	
	C1-C3 end wall	4	X	2	X	2.63	X	0.65	X	0.00	0.00	
	C3-C2	4	X	2	X	3.75	X	0.65	X	0.00	0.00	
	C2-C2 M	2	X	2	X	3.65	X	0.65	X	0.00	0.00	
	Apron long	2	X	2	X	45.10	X	1.28	X	0.00	0.00	
	Apron Short	2	X	2	X	16.44	X	1.28	X	0.00	0.00	
	<b>Total</b>		X								<b>0.00</b>	<b>Cum</b>
3	Excavation for foundation in hard murum including removing the excavated material upto distance of metres beyond the building area and stacking and spreading as directed, dewatering, preparing the bed for the foundation and necessary back filling, ramming, watering including shoring and strutting etc. complete. (Lift upto 1.50 m) By Mechanical Means											
	Column C1	14	X	1	X	1.65	X	1.45	X	0.80	26.80	
	Column C3	4	X	1	X	1.80	X	1.80	X	0.80	10.37	
	Column C2 MIDDLE	0	X	2	X	1.65	X	1.45	X	0.80	0.00	
	Column C4 RS	0	X	7	X	0.00	X	0.00	X	0.80	0.00	
	Column Platform (CP)	0	X	2	X	1.30	X	1.30	X	0.80	0.00	
	For ground beam pannel											
	C1-C1 middle	4	X	8	X	2.80	X	0.65	X	0.00	0.00	
	C1-C3 end wall	4	X	2	X	2.63	X	0.65	X	0.00	0.00	
	C3-C2	4	X	2	X	3.75	X	0.65	X	0.00	0.00	
	C2-C2 M	2	X	2	X	3.65	X	0.65	X	0.00	0.00	
	Apron long	2	X	2	X	45.10	X	1.28	X	0.00	0.00	
	Apron Short	2	X	2	X	16.44	X	1.28	X	0.00	0.00	
	<b>Total</b>		X								<b>37.16</b>	<b>Cum</b>
4	Excavation for foundation in Hard murum including removing the excavated material upto a distance of 50 metres beyond the building area and stacking and spreading as directed, dewatering, preparing the bed for the foundation and necessary back filling, ramming, watering including shoring and strutting etc. complete. (Lift from 1.5 to 3.0m.) By Mechanical Means											
	Column C1	4	X	9	X	1.65	X	1.45	X	0.00	0.00	
	Column C3	4	X	2	X	1.80	X	1.80	X	0.00	0.00	
	Column C2 MIDDLE	4	X	2	X	1.65	X	1.45	X	0.00	0.00	
	Column C4 RS	2	X	7	X	0.00	X	0.00	X	0.00	0.00	
	Column Platform (CP)	8	X	2	X	1.30	X	1.30	X	0.00	0.00	

Sr. No.	Item Description	Nos			Length (M)	Breadth (M)	Height/Dept. (M)	Quantity	Units
	For ground beam pannel								
	C1-C1 middle	4	X	8	X 2.80	X 0.65	X 0.00	0.00	
	C1-C3 end wall	4	X	2	X 2.63	X 0.65	X 0.00	0.00	
	C3-C2	4	X	2	X 3.75	X 0.65	X 0.00	0.00	
	C2-C2 M	2	X	2	X 3.65	X 0.65	X 0.00	0.00	
	Apron long	2	X	2	X 45.10	X 1.28	X 0.00	0.00	
	Apron Short	2	X	2	X 16.44	X 1.28	X 0.00	0.00	
	<b>Total</b>							<b>0.00</b>	<b>Cum</b>
5	Excavation for foundation in hard murum and boulders including removing the excavated material up to a distance 50 metres, beyond the building area and stacking and spreading as directed, dewatering, preparing the bed for the foundation and necessary back filling, ramming, watering including shoring and strutting etc. complete. (Lift upto 1.5m.) By Mechanical Means								
	Column C1	14	X	1	X 1.65	X 1.45	X 0.50	16.75	
	Column C3	4	X	1	X 1.80	X 1.80	X 0.50	6.48	
	Column C2 MIDDLE	0	X	2	X 1.65	X 1.45	X 0.50	0.00	
	Column C4 RS	0	X	7	X 0.00	X 0.00	X 0.50	0.00	
	Column Platform (CP)	0	X	2	X 1.30	X 1.30	X 0.50	0.00	
	For ground beam pannel								
	C1-C1 middle	4	X	8	X 2.80	X 0.65	X 0.00	0.00	
	C1-C3 end wall	4	X	2	X 2.63	X 0.65	X 0.00	0.00	
	C3-C2	4	X	2	X 3.75	X 0.65	X 0.00	0.00	
	C2-C2 M	2	X	2	X 3.65	X 0.65	X 0.00	0.00	
	Apron long	2	X	2	X 45.10	X 1.28	X 0.00	0.00	
	Apron Short	2	X	2	X 16.44	X 1.28	X 0.00	0.00	
	<b>Total</b>							<b>23.23</b>	<b>Cum</b>
6	Excavation for foundation in Hard murum and boulders including removing the excavated material upto a distance of 50 metres, beyond the building area and stacking and spreading as directed, dewatering, preparing the bed for the foundation and necessary back filling, ramming, watering including shoring and strutting etc. complete. (Lift from 1.5 m to 3.0 m.) By Mechanical Means								
	Column C1	4	X	9	X 1.65	X 1.45	X 0.00	0.00	
	Column C3	4	X	2	X 1.80	X 1.80	X 0.00	0.00	
	Column C2 MIDDLE	4	X	2	X 1.65	X 1.45	X 0.00	0.00	
	Column C4 RS	2	X	7	X 0.00	X 0.00	X 0.00	0.00	
	Column Platform (CP)	8	X	2	X 1.30	X 1.30	X 0.00	0.00	
	For ground beam pannel								
	C1-C1 middle	4	X	8	X 2.80	X 0.65	X 0.00	0.00	
	C1-C3 end wall	4	X	2	X 2.63	X 0.65	X 0.00	0.00	
	C3-C2	4	X	2	X 3.75	X 0.65	X 0.00	0.00	
	C2-C2 M	2	X	2	X 3.65	X 0.65	X 0.00	0.00	
	Apron long	2	X	2	X 45.10	X 1.28	X 0.00	0.00	
	Apron Short	2	X	2	X 16.44	X 1.28	X 0.00	0.00	
	<b>Total</b>							<b>0.00</b>	<b>Cum</b>
7	Excavation for roadway in earth, soil of all sorts, sand, gravel or soft murum including dressing section to the required grade, camber and side slopes and conveying the excavated materials with all lifts upto a lead of 50m. and spreading for embankment or stacking as directed.								
	For WH buildg	1	X	1	X 41.65	X 18.68	X 0.15	116.70	
	<b>Total qty.</b>							<b>116.70</b>	<b>Cum</b>
8	Excavation for roadway in hard murum and boulder including dressing section to the required grade, camber and side slopes and conveying the excavated materials with all lifts upto a lead of 50m. and spreading for embankment or stacking as directed.								
	For WH buildg	1	X	1	X 41.65	X 18.68	X 0.30	233.41	
	<b>Total qty.</b>							<b>233.41</b>	<b>Cum</b>
9	Providing and laying Cast in situ/Ready Mix cement concrete M-20 of trap/ granite / quartzite/ gneiss metal for R.C.C. slabs and landings as per detailed designs and drawings including steel centering, formwork, cover blocks, laying/pumping, compaction finishing the formed surfaces with cement mortar 1:3 of sufficient minimum thickness to give a smooth and even surface or roughening if special finish is to be provided and curing etc. complete.(Excluding reinforcement and structural steel).with fully automatic micro processor based PLC with SCADA enabled reversible Drum Type mixer/ concrete Batch mix plant (Pan mixer) etc. complete. With fine aggregate (Natural Sand / Crushed sand VSI Grade finely washed etc)(Item No.25.70 BDF 8 Page.No.236)								
	BED CONCRETE IN WH	1	X	1	X 41.65	X 18.68	X 0.075	58.35	
	Column C1	14	X	1	X 1.65	X 1.45	X 0.075	2.51	
	Column C3	4	X	1	X 1.80	X 1.80	X 0.075	0.97	
	Column C2 MIDDLE	0	X	2	X 1.65	X 1.45	X 0.075	0.00	
	Column C4 RS	0	X	7	X 0.00	X 0.00	X 0.075	0.00	
	Column Platform (CP)	0	X	2	X 1.30	X 1.30	X 0.075	0.00	
	For ground beam pannel								
	C1-C1 middle	14	X	1	X 4.20	X 0.65	X 0.075	2.87	
	C1-C3 end wall	4	X	1	X 4.03	X 0.65	X 0.075	0.79	
	C3-C2	0	X	2	X 5.15	X 0.65	X 0.075	0.00	

Sr. No.	Item Description	Nos			Length (M)	Breadth (M)	Height/Dept. (M)	Quantity	Units			
	C2-C2 M	0	X	2	X	5.05	X	0.65	X	0.075	0.00	
	Apron long	2	X	2	X	45.10	X	1.28	X	0.075	17.32	
	Apron Short	2	X	2	X	16.44	X	1.28	X	0.075	6.31	
	UCR OF RAMP TO LONG SIDE	0	X	0	X	7.50	X	0.65	X	0.100	0.00	
	BETWEEN UCR OF RAMP	0	X	1	X	5.85	X	7.50	X	0.100	0.00	
										Total qty.	89.12	Cum
10	Providing and laying Cast in situ/Ready Mix cement concrete M-20 of trap/ granite/ quartzite/ gneiss metal for R.C.C. chajja as per detailed design and drawings including steel centering, formwork, cover blocks, laying/pumping, compacting and roughening the surface if special finish is to be provided and curing complete. (Excluding reinforcement and structural steel). with fully automatic micro processor based PLC with SCADA enabled reversible Drum Type mixer/ concrete Batch mix plant (Pan mixer) etc. complete. With fine aggregate (Natural Sand / Crushed sand VSI Grade finely washed etc)(Item No.26.05 BDF 9 Page.No.239)											
	Apron long	1	X	2	X	45.10	X	0.45	X	0.350	14.21	
	Apron Short	1	X	2	X	17.90	X	0.45	X	0.350	5.64	
	UCR OF RAMP TO LONG SIDE	1	X	0	X	7.50	X	0.45	X	1.250	0.00	
										Total qty.	19.85	Cum
11	Providing second class Burnt Brick masonry with conventional/ I.S. type bricks in cement mortar 1:6 in foundations and plinth of inner walls/ in plinth external walls including bailing out water manually , striking joints on unexposed faces, raking out joints on exposed faces and watering etc. Complete.											
	C1-C1 middle	14	X	1	X	3.90	X	0.35	X	1.000	19.11	
	C1-C3 end wall	4	X	1	X	3.73	X	0.35	X	1.000	5.22	
	C3-C2	4	X	2	X	4.85	X	0.35	X	1.000	13.58	
	C2-C2 M	2	X	2	X	4.75	X	0.35	X	1.000	6.65	
	Apron long	2	X	1	X	45.10	X	0.35	X	0.450	14.21	
	Apron Short	2	X	1	X	18.68	X	0.35	X	0.450	5.89	
	<b>Total</b>										64.65	cum
12	Providing & laying 35 cm wide single layer tarfet by applying initial coat of shallbond @ 1 kg /sqm fixing in place by wire nails for DPC at plinth as directed by engineer incharge											
	C1-C1 middle	1	X	14	X	3.90	X	0.35	X		19.11	
	C1-C3 end wall	1	X	4	X	3.73	X	0.35	X		5.22	
	C3-C2	2	X	2	X	4.85	X	0.35	X		6.79	
	C2-C2 M	1	X	2	X	4.75	X	0.35	X		3.33	
	Apron long	0	X	1	X	45.10	X	0.35	X		0.00	
	Apron Short	0	X	1	X	18.68	X	0.35	X		0.00	
	Deduction for shutter panel	0	X	0	X	0.00	X	0.00	X		0.00	
	<b>Total</b>										34.45	Cum
13	Providing and fixing in position TMT - FE - 500 bar reinforcement of various diameters for R.C.C. pile caps, footings, foundations, slabs, beams columns, canopies, staircase, newels, chajjas, lintels pardis, copings, fins, arches etc. as per detailed designs, drawings and schedules. including cutting, bending, hooking the bars, binding with wires or tack welding and supporting as required complete.											
	FOOTING	18.38										
	COLUMN	23.45										
	BEAMS & LINELT	74.49										
	WHEATHER SHEDS & CANOPIES	3.98										
	R.C.C. slab	4.68		100	X	100.00					10000.00	
		130.00									10.00	
	<b>Total</b>										10.00	MT
14	Providing and laying in situ /Ready Mix cement concrete M-20 of trap / granite /quartzite/ gneiss metal for R.C.C. work in foundations like raft, strip foundations, grillage and footings of R.C.C. columns and steel stanchions etc. including bailing out water, Steel centering formwork, laying/pumping cover blocks, compaction and curing roughening the surface if special finish is to be provided (Excluding reinforcement and structural steel) etc. complete, with fully automatic micro processor based PLC with SCADA enabled reversible Drum Type mixer/ concrete Batch mix plant (Pan mixer) etc. complete. With fine aggregate (Crushed sand VSI Grade)											
	Column C1	14	X	1	X	1.55	X	1.35	X	0.45	13.18	
	Column C3	4	X	1	X	1.70	X	1.70	X	0.45	5.20	
	Column C2 MIDDLE	0	X	2	X	1.55	X	1.35	X	0.45	0.00	
	Column C4 RS	0	X	7	X	0.00	X	0.00	X	0.00	0.00	
	Column Platform (CP)	0	X	2	X	1.20	X	1.20	X	0.45	0.00	
										Total qty.	18.38	cum
15	Providing and laying in situ /Ready Mix cement concrete M-20 of trap / granite /quartzite/ gneiss metal for R.C.C. work in foundations like raft, strip foundations, grillage and footings of R.C.C. columns and steel stanchions etc. including bailing out water, Steel centering formwork, laying/pumping cover blocks, compaction and curing roughening the surface if special finish is to be provided (Excluding reinforcement and structural steel) etc. complete, with fully automatic micro processor based PLC with SCADA enabled reversible Drum Type mixer/ concrete Batch mix plant (Pan mixer) etc. complete. With fine aggregate (Crushed sand VSI Grade)											
	<b>Column upto plinth</b>											
	Column C1	14	X	1	X	0.30	X	0.50	X	2.35	4.94	

Sr. No.	Item Description	Nos				Length (M)	Breadth (M)		Height/Dept. (M)	Quantity	Units
	Column C2 MIDDLE	4	X	1	X	0.30	X	0.50	X	2.35	1.41
	Column C3	4	X	2	X	0.34	X	0.50	X	2.35	3.20
	Column No.platform	0	X	2	X	0.57	X	0.30	X	2.35	0.00
	Column near RS	2	X	7	X	0.15	X	0.34	X	0.00	0.00
	<b>Column Above Plinth</b>										
	Column C1	14	X	1	X	0.30	X	0.50	X	5.15	10.82
	Column C2 MIDDLE	4	X	1	X	0.30	X	0.50	X	5.15	3.09
	Column C3	0	X	2	X	0.34	X	0.50	X	5.15	0.00
	Column No.platform	0	X	2	X	0.57	X	0.30	X	0.00	0.00
	Column near RS	0	X	7	X	0.15	X	0.34	X	2.50	0.00
	<b>Total</b>									<b>23.45</b>	<b>Cum</b>
16	Providing and laying Cast in situ/Ready Mix cement concrete M-20 of trap / granite /quartzite/ gneiss metal for R.C.C. beams and lintels as per detailed designs and drawings or as directed including steel centering, formwork, cover blocks, laying/pumping, compaction and roughening the surface if special finish is to be provided and curing etc. complete. (Excluding reinforcement and structural steel). with fully automatic micro processor based PLC with SCADA enabled reversible Drum Type mixer/ concrete Batch mix plant (Pan mixer) etc. complete. With fine aggregate (Crushed sand VSI Grade)										
	<b>GROUND BEAM</b>										
	C1-C1 middle	4	X	8	X	3.90	X	0.35	X	0.45	19.66
	C1-C3 end wall	4	X	2	X	3.73	X	0.35	X	0.45	4.70
	C3-C2	4	X	2	X	4.85	X	0.35	X	0.45	6.11
	C2-C2 M	2	X	2	X	4.75	X	0.35	X	0.45	2.99
	<b>PLATFORM BEAM</b>										
	PB1	2	X	4	X	3.90	X	0.35	X	0.45	4.91
	PB2	2	X	4	X	3.73	X	0.30	X	0.45	4.03
	PB3	2	X	4	X	1.20	X	0.30	X	0.30	0.86
	OFFSET	2	X	4	X	3.90	X	0.21	X	0.15	0.98
	OFFSET	4	X	4	X	1.20	X	0.21	X	0.15	0.60
	<b>LINTELS</b>										
	OVER V1	4	X	17	X	1.50	X	0.35	X	0.10	3.57
	<b>DOOR BEAM</b>										
	C1-C1 middle	2	X	8	X	3.90	X	0.23	X	0.30	4.31
	C1-C3 end wall	4	X	2	X	3.73	X	0.23	X	0.30	2.06
	C3-C2	4	X	2	X	4.85	X	0.35	X	0.45	6.11
	C2-C2 M	2	X	2	X	4.75	X	0.23	X	0.30	1.31
	<b>EAVES BEAM</b>										
	C1-C1 middle	2	X	8	X	3.90	X	0.23	X	0.30	4.31
	C1-C3 end wall	4	X	2	X	3.73	X	0.23	X	0.30	2.06
	C3-C2	4	X	2	X	4.85	X	0.23	X	0.30	2.68
	C2-C2 M	2	X	2	X	4.75	X	0.35	X	0.30	2.00
	<b>AT GABLE</b>										
	C2-C3 @ 1.50 MTR	2	X	2	X	4.50	X	0.23	X	0.30	1.24
	C2-C2 @3.00 MTR	2	X	2	X	0.00	X	0.35	X	0.45	0.00
										Total qty.	74.49
											<b>CUM</b>
17	Providing and laying Cast in situ/Ready Mix cement concrete M-20 of trap/ granite/ quartzite/ gneiss metal for R.C.C. chajja as per detailed design and drawings including steel centering, formwork, cover blocks, laying/pumping, compacting and roughening the surface if special finish is to be provided and curing complete. (Excluding reinforcement and structural steel). with fully automatic micro processor based PLC with SCADA enabled reversible Drum Type mixer/ concrete Batch mix plant (Pan mixer) etc. complete. With fine aggregate (Crushed sand VSI Grade)										
	V1	4	X	17	X	1.50	X	0.52	X	0.08	3.98
										Total qty.	3.98
											<b>Sqm</b>
18	Providing and laying Cast in situ/Ready Mix cement concrete M-20 of trap/ granite / quartzite/ gneiss metal for R.C.C. slabs and landings as per detailed designs and drawings including steel centering, formwork, cover blocks, laying/pumping, compaction finishing the formed surfaces with cement mortar 1:3 of sufficient minimum thickness to give a smooth and even surface or roughening if special finish is to be provided and curing etc. complete.(Excluding reinforcement and structural steel).with fully automatic micro processor based PLC with SCADA enabled reversible Drum Type mixer/ concrete Batch mix plant (Pan mixer) etc. complete. With fine aggregate (Crushed sand VSI Grade)										
	PLATFORM SLAB	2	X	4	X	3.90	X	1.20	X	0.13	4.68
										Total qty.	4.68
											<b>Sqm</b>
19	Providing second class Burnt Brick masonry with conventional/ I.S. type bricks in cement mortar 1:6 in superstructure including striking joints, raking out joints, watering and scaffolding etc. Complete										
	<b>FOR PANEL UPTO 2.5 M</b>										
	C1-C1 middle	2	X	8	X	3.90	X	0.35	X	2.50	54.60
	C1-C3 end wall	6	X	2	X	3.73	X	0.35	X	2.50	39.17

Sr. No.	Item Description	Nos				Length (M)		Breadth (M)		Height/Dept. (M)	Quantity	Units
	C3-C2	6	X	2	X	4.85	X	0.35	X	2.50	50.93	
	C2-C2 M	2	X	2	X	4.75	X	0.35	X	2.50	16.63	
	<b>ABOVE DB BELOW AC SHEET</b>											
	C1-C1 middle	4	X	8	X	3.90	X	0.23	X	2.55	73.20	
	C1-C3 end wall	4	X	2	X	3.73	X	0.23	X	2.55	17.50	
	C3-C2	4	X	2	X	4.85	X	0.23	X	2.55	22.76	
	C2-C2 M	4	X	2	X	4.75	X	0.23	X	2.55	22.29	
	GABLE	4	X	0.5	X	18.68	X	0.23	X	2.55	21.91	
	<b>Deduction for</b>									<b>TOTL</b>	318.97	
	ROLLING SHUTTER	2	X	4	X	2.10	X	0.35	X	2.50	14.70	
	V1	4	X	17	X	0.60	X	0.35	X	0.60	8.57	
	V2	4	X	20	X	1.00	X	0.23	X	0.60	11.04	
	V3	4	X	3	X	1.30	X	0.23	X	0.45	1.61	
	V2 IN GABLE	1	X	5	X	1.00	X	0.23	X	0.60	0.69	
	<b>BEAMS &amp; LINELT @</b>											
	V1,V2										1.79	
	EAVES BEAM										9.05	
	C2-C2 M										7.67	
	<b>C2 IN GABLE</b>										3.50	
	BED BLOCK BELOW V1, PURLIN ETC.										0.71	
										<b>TOTAL</b>	<b>59.33</b>	<b>CUM</b>
	Qty. as per I. No.14									<b>GRAND TOTAL</b>	<b>259.63</b>	<b>Sqm</b>
20	Providing and laying Cast in situ/Ready Mix cement concrete M-15 of trap/granite/quartzite/gneiss metal for coping to plinth or parapet, moulded or chamfered as per drawing or as directed including steel centering, plywood/ steel formwork compacting, roughening them if special finish is to be provided, finishing uneven and honeycombed surface and curing etc. complete. The Cement Mortar 1:3 plaster is considered for rendering uneven and honeycombed surface only. Newly laid concrete shall be covered by gunny bag, plastic, tarpaulin etc. (Wooden centering will not be allowed.) With fine aggregate (Crushed sand VSI Grade)											
	BELOW V1	4	X	17	X	0.60	X	0.35	X	0.08	1.14	Sqm
										<b>TOTAL</b>	1.14	
21	Providing sand faced plaster externally in cement mortar using approved screened sand, in all positions including base coat of 15 mm thick in cement mortar 1:4 using waterproofing compound at 1Kilogramper cement bag curing the same for not less than 2 days and keeping the surface of the base coat rough to receive the sand faced treatment 6 to 8 mm thick in cement mortar 1:4 finishing the surface by taking out grains and curing for fourteen days scaffolding etc.complete.											
	<b>OUTSIDE</b>											
	LONG WALL	1	X	2	X	42.50	X	6.10	X		518.44	
	SHORT WALL	2	X	2	X	18.68	X	6.10	X		455.79	
	GABLE WALL	1	X	4	X	7.85	X	2.25	X		70.65	
	COLUMN OFFSET C1	2	X	9	X	0.22	X	6.10	X		24.16	
	3 OFFSET	2	X	2	X	0.22	X	6.1	X		5.37	
	C2 OFFSET	2	X	2	X	0.22	X	6.10	X		5.37	
	C2 IN GABLE	2	X	2	X	0.22	X	1.50	X		1.32	
	C2 IN GABLE	1	X	2	X	0.22	X	3.00	X		1.32	
	V1 TOP, BOTTOM	0.5	X	17	X	1.60	X	0.67	X		9.13	
	<b>Deduction for</b>									<b>TOTAL</b>	1091.54	
	ROLLING SHUTTER	1	X	4	X	2.10	X	2.55	X		21.42	
	V1	0.5	X	17	X	0.60	X	0.60	X		3.06	
	V2	0.5	X	20	X	1.00	X	0.60	X		6.00	
	V3	0.5	X	2	X	1.30	X	0.45	X		0.59	
										<b>TOTAL</b>	<b>31.07</b>	<b>CUM</b>
	Qty. as per I. No.14									<b>GRAND TOTAL</b>	<b>1060.47</b>	<b>Sqm</b>
22	Providing internal cement plaster 20mm thick in Single coats in cement mortar 1:4 without neeru finish, to concrete, brick surface, in all positions including scaffolding and curing etc.complete.											
	<b>INSIDE</b>											
	LONG WALL	2	X	1	X	42.50	X	5.15	X		437.70	
	SHORT WALL	2	X	1	X	18.68	X	5.15	X		192.40	
	GABLE WALL	1	X	2	X	7.85	X	2.25	X		35.33	
	<b>Deduction for</b>									<b>TOTAL</b>	665.43	
	ROLLING SHUTTER	1	X	4	X	2.10	X	2.55	X		21.42	
	V1	0.5	X	17	X	0.60	X	0.60	X		3.06	
	V2	0.5	X	20	X	1.00	X	0.60	X		6.00	
	V3	0.5	X	3	X	1.30	X	0.23	X		0.45	

Sr. No.	Item Description	Nos	Length (M)	Breadth (M)	Height/ Dept. (M)	Quantity	Units			
						<b>TOTAL</b>	<b>30.93</b>	<b>CUM</b>		
						<b>GRAND TOTAL</b>	<b>634.50</b>	<b>Sqm</b>		
23	Providing internal cement plaster 20mm thick in positions including scaffolding and curing etc.complete.	Single coats in cement mortar 1:4 with neeru finish, to concrete, brick surface, in all								
<b>PLINTH</b>										
	LONG WALL	1	X	1	X	42.50	X	1.00	X	42.50
	SHORT WALL	1	X	1	X	18.68	X	1.00	X	18.68
	PALTFORM TAPER SIDE	1	X	2	X	3.90	X	0.30	X	2.34
	BOTTOM	1	X	2	X	3.90	X	0.80	X	6.24
	APRON UCR LONG	1	X	1	X	45.10	X	0.70	X	31.57
	SHORT	1	X	1	X	18.68	X	0.70	X	13.08
	APRON BBM LONG	1	X	1	X	45.10	X	1.80	X	81.18
	SHORT	1	X	1	X	18.68	X	1.80	X	33.63
								Total qty.	<b>229.22</b>	<b>Sqm</b>
24	Providing internal cement plaster 12mm thick in all positions including scaffolding and curing etc. complete.	single coat in cement mortar 1:4 without neeru finish to concrete or brick surfaces, in								
<b>WHEATHER SHEDS OVER</b>										
	V1 TOP,BOTTOM	2	X	17	X	1.55	X	0.65	X	34.26
	SIDES	1	X	17	X	0.45	X	0.075	X	0.57
	2 TOP,BOTTOM	2	X	20	X	1.10	X	0.67	X	29.48
	SIDES	1	X	20	X	0.45	X	0.075	X	0.68
								1		64.98
								Total qty.	<b>64.98</b>	<b>Sqm</b>
25	Providing and applying white-wash in two coats on old / new plastered or masonry surfaces including scaffolding and preparing the surface by brushing and brooming down etc. complete.	and asbestos cement sheets including								
<b>INSIDE</b>										
	LONG WALL	1	X	2	X	41.65	X	5.15	X	429.00
	SHORT WALL	1	X	2	X	15.00	X	5.150	X	154.50
	GABLE	0.5	X	4	X	7.50	X	2.55	X	38.25
								Total qty.	<b>621.75</b>	<b>Sqm</b>
<b>DEDUCTON</b>										
	ROLLING SHUTTER	1	X	4	X	2.10	X	2.55	X	21.42
	V1	1	X	17	X	1.00	X	0.60	X	10.20
	V2	1	X	20	X	1.00	X	0.60	X	12.00
										43.62
						<b>GRAND TOTAL</b>	<b>578.13</b>			
26	Providing and applying two coats of exterior acraylic emulsion paint confirming to corresponding I.S. of approved manufacture and approved colour to the plastered surfaces including cleaning ,preparing the plaster surface, applying primer coat ,scaffolding if necessary , and watering the surface for two days etc complete.	and asbestos cement sheets including								
<b>OUTSIDE</b>										
	LONG WALL	1	X	2	X	42.50	X	5.25	X	446.20
	SHORT WALL	1	X	2	X	18.68	X	5.250	X	196.14
	GABLE WALL	4	X	0.5	X	7.50	X	2.55	X	38.25
	COLUMN OFFSET C1	2	X	9	X	0.22	X	6.10	X	24.16
	C3 OFFSET	2	X	2	X	0.22	X	6.100	X	5.37
	C2 OFFSET	2	X	2	X	0.22	X	6.10	X	5.37
								Total qty.	<b>715.48</b>	<b>Sqm</b>
<b>DEDUCTON</b>										
	ROLLING SHUTTER	1	X	4	X	2.10	X	2.55	X	21.42
	V1	0.5	X	17	X	0.60	X	0.60	X	3.06
	V2	0.5	X	20	X	1.00	X	0.60	X	6.00
										30.48
						<b>GRAND TOTAL</b>	<b>685.00</b>			
27	Providing and applying two coats (exterior quality) of flat oil paint of approved colour and shade to the plastered surface in buildings and workshops including scaffolding if necessary, cleaning the surface and preparing surface etc. complete. (excluding primer coat)									
<b>PLINTH</b>										
	LONG WALL	1	X	2	X	42.50	X	0.90	X	76.49

Sr. No.	Item Description	Nos			Length (M)	Breadth (M)	Height/ Dept. (M)	Quantity	Units		
	SHORT WALL	1	X	2	X	18.68	X	0.900	X	33.62	
	STACK LINE										
	LONG	2	X	8	X	6.00	X	0.05	X	4.80	
	SHORT	2	X	8	X	12.60	X	0.050	X	10.08	
								Total qty.		125.00 Sqm	
28	Providing and fixing rolling shutter fabricated from steel laths of minimum thickness 0.9 mm with lock plate of 3.15 mm thickness reinforced with 35 x 35 x 5 mm angle section fitted with sliding bolts and handles for both sides, deep M.S. channel section of depth and thickness not less than 65 mm and 3.15 mm respectively with hold fast arrangements, M.S. Bracket plate 300 x 300 x 3.15 mm minimum size and shape with square bar, suspension shaft of minimum 32 mm diameter, hood cover of M.S. sheet not less than 0.9 mm thickness and of any size at top and safety devices including mechanical gear operation arrangement consisting of worm gear wheels and worms of high grade cast iron or mild steel and one coat of red lead primer etc. complete. (I.S. 6248:1979) (Without mechanical gear)										
	ROLLING SHUTTERS	1	X	4	X	2.10	X	2.50	X	1.00	21.00
								Total qty.		21.00 Sqm	
29	Providing and fixing M.S. grill door 24 Kilogram/Square Metre of various size as per detailed drawings without hot dip coating, iron fixtures and fastenings and 3 coats of oil painting etc										
	V1	2	X	17	X	0.60	X	0.60	X	12.24	
	V2	2	X	20	X	1.00	X	0.600	X	24.00	
	V3 UP SIDE OF SHUTTER	2	X	2	X	1.30	X	0.450	X	2.34	
								Total qty.		38.58 Sqm	
30	Providing structural steel work in trusses, other similar trussed purlins and members with all bracing, gusset plates etc. as per detailed designs and drawings or as directed including cutting, fabricating, hoisting, erecting fixing in position, Making riveted/ bolted/ welded connection and one coat of anticorrosive paint and over it 2 coats of oil painting approved quality and shade etc. complete.										
	TOTAL AREA GODOWN										
	MAIN BIULDG	42	X	18.5		777.00	X	24.800	X	19269.60	
						SQ.AREA		KG		19269.60	
								Total qty.		19.27 MT	
31	Providing and fixing colour coated Zinalume ( R ) AZ150 ( min 150 gms/sq.mt. total on each side ) profiled sheets for roofing. The feed material is manufactured out of nominal 0.45 mm Base Metal Thickness ( BMT ) ( 0.5 mm TCT ), Hi-strength steel with min.550 MPa yield strength, metallic hot dip coated with Aluminium-Zinc alloy ( 55% aluminium 43.4% zinc 1.6% silicon ) with COLORBOND ( R ) steel quality super durable polyester paint coat ( with inorganic pigment). The paint shall have a total coating thickness of nominal 35 um, comprising of nominal 25 um exterior coat on top surface and nominal 10 um reverse coat on back surface. Profile sheet shall have nom. 950-1050 mm effective cover width and nominal 25-30 mm deep ribs with subtle square fluting in the five pan at nominal 180-250 mm center- to-center. The end rib shall be designed for anti-capillary groove. and return leg. The feed material should have coil manufacturers product details marked a regular interval. Including fasteners with min. fastened with min. 25 um Zinc-Tin alloy coated, Hex head, self-drilling screw etc. complete. (weight of profile 4.52 Kilogram/Square Metre)										
	MAIN BIULDG	1	X	2	X	42.12	X	8.100	X	682.29	
	PLATFORM	1	X	4	X	4.91	X	2.000	X	39.28	
										721.57	
								Total qty.		721.57 SQ	
32	Providing and fixing of colour coated Zinaluminium( R ) AZ150 ( min 150 gms/sq.mt. total on each side ) profiled sheets for roofing. The feed material is manufactured out of nominal 0.45 mm Base Metal Thickness ( BMT ) ( 0.5 mm TCT ), Hi-strength steel with min.550 MPa yield strength, metallic hot dip coated withAluminium-Zinc alloy ( 55% aluminiumm 43.4% zinc 1.6% silicon ) with COLORBOND ( R ) steel quality super durable polyster paint coat ( with inorganic pigment). The paint shall have a total coating thickness of nominal 35 mm, comprising of nominal 25mm exterior coat on top surface and nominal 10 um reverse coat on back surface. Profile sheet shall have nom. 950-1050 mm effective cover width and nominal 25-30 mm deep ribs with sublet square fluting in the five pan at nominal 180-250 mmcenter- to-center. The end rib shall be designed for anti-capacity groove. and return leg. The feed material should have coil manufacturers product details marked a regular interval. including fasteners with min. fastened with min. 25 um Zinc-Tin alloy coated, Hex head, self-drilling screw etc. complete. (weight of profile 4.52 Kilogram/Square Metre) 600 mm girth (Surface Width).										
	MAIN BIULDG	1	X	1	X	42.50	X	1.000	X	42.50	
								Total qty.		42.50 RGM	
33	Providing and fixing wind opparated tarbo SS ventilator system ( 24 inchdia.) over existing roof including cutting of sheet proper fixing in possition to true line & leve lwith all fixture & fastening										
	FOR WH BIULDG	2	X	6	X	1.00	X	1.000	X	12.00	
								Total qty.		12.00 NO	
34	Providin & Fixing Parapet coping of size 35 by 35 cm in cement mortar 1 is to 4 with conical top and side drop and round finish at ac sheets joint including finishing the hole with 20mm thick cement plaster 1 is to 4 with cement finish										
	PARAPET COPING	2	X	2	X	8.00	X		X	32.00	
								Total qty.		32.00 RMT	
35	#NAME?										
	QTY RECIVED FROM EXCAVATION	1	X	1	X	41.65	X	21.000	X	0.30	262.40

Sr. No.	Item Description	Nos			Length (M)	Breadth (M)	Height/ Dept. (M)	Quantity	Units		
								262.40			
	ITEM NO.03	37.16	X	5.93	X	X	X	58.07	58.07		
	ITEM NO.04	23.23	X	43.67	X	X	X	3.67	40.00		
								98.07			
								<b>Total qty.</b>	<b>164.33 CUM</b>		
36	providing hard murum cohesive non swelling material in plinth in layer of 20 cm etc completed as directed only compactor thickness is payable										
	MAIN BIULDG	1	X	1	X	41.05	X	14.400	X	0.40	236.45
	APRON										
	LONG	1	X	2	X	45.10	X	0.370	X	0.45	15.02
	SHORT	1	X	2	X	18.68	X	0.370	X	0.45	6.22
								<b>Total qty.</b>		<b>257.69 CUM</b>	
37	Compacting the hard murum side widths including laying in layers on each side with vibratory roller including artificial watering etc. complete.										
	MAIN BIULDG	1	X	2	X	41.05	X	14.400	X		1182.24
								<b>Total qty.</b>		<b>1182.24 SQ</b>	
38	Providing and laying stone metal layer of 20 CM thickness with 60mm oversize metal 65% and 40mm size metal 35% with sand or stone chips spreading and level in and packing completed										
	MAIN BIULDG	1	X	1	X	41.05	X	14.400	X	0.30	177.34
	MAIN BIULDG INNER PERIFERI	1	X	1	X	41.65	X	0.600	X	0.60	14.99
		1	X	1	X	14.40	X	0.600	X	0.60	5.18
								<b>Total qty.</b>		<b>197.51 CUM</b>	
39	Compacting oversize and size metals layers Combinedly with power roller not less than 8 terms including artificial watering and levelling it is completed as directed										
	MAIN BIULDG	1	X	2	X	41.05	X	14.400	X		1182.24
								<b>Total qty.</b>		<b>1182.24 SQM</b>	
40	Providing and laying in situ cement concrete M20 with tremix treatment for 100 mm thickness for flooring with groove cutting of 4mm wide and 20mm deep with necessary refilling with bitumen etc. complete.										
	MAIN BIULDG	1	X	1	X	41.65	X	15.000	X	1.00	624.75
								<b>Total qty.</b>		<b>624.75 SQM</b>	
41	Providing treatment after remix vacuum dewatering over prelid cement concrete 1 is to 2 is to 4 surface including fixing of MS channel network as per required size and place of double rod vibrating the concrete by needle vibrator and levelling by										
	MAIN BIULDG	1	X	1	X	41.65	X	15.000	X		624.75
								<b>Total qty.</b>		<b>624.75 SQM</b>	
42	Providing groove cutting 50mm providing groove cutting 50 mm wire 6mm in cement concrete floor in etc complete as directed										
	MAIN BIULDG	0	X	3	X	41.65	X		X		0.00
		0	X	10	X	15.00	X		X		0.00
								<b>Total qty.</b>		<b>0.00 SQM</b>	
43	Providing and fabricating structural steel work in rolled sections like joists, channels, angles, tees etc. as per detailed design and drawings or as directed including cutting, fabricating, hoisting, erecting, fixing in position making riveted / bolted /welded connections without connecting plates, braces etc and including one coat of anticorrosive paint and over it two coats of oil FOR PLATFORS @ 12.10KG/M	1	X	4	X	6.30	X	16.800	KG/M		423.36
	HOLD FAS 20MM DIA @2.50 KG/M	4	X	12	X	0.50	X	2.500	KG/M		60.00
	L50X50X6 MM FOR FIRE BUCKET @ 4.50 KG/M										<b>483.36</b>
								<b>Total qty.</b>		<b>0.48 MT</b>	
44	Providing and fixing in position MS ladder of 45 CM width made of 50 by 50 by 6mm two angles for rails and Ms angle stiffness at three places as directed with MS round bars of 20mm diameter for steps at every 30cm Centre to Centre including fixing										
		1	X	1	X	8.00	X				8.00
								<b>Total qty.</b>		<b>8.00 RMT</b>	
45	Providing and fixing lioghtening conductor system comprising of erecting Air-Termination consisting of tubular copper rod of 25mm dia. 1.2 mm thick with multiple points head 1.2 mt. long ( Heavy Duty) welded or clamped to G.I. pipe pole B grade 50 mm dia of requiired length with M.S. round bnase plate 25 Cm diam and 10mm thick at bottom embeded in cement concrete 1:3:6 dfoundation of size 45 cm diam x 45 cm Height and providing earthing with copper earth plate of size 60 x 60 x 0.3 cms with cadmium plated nut bolts to fix earthing strip burried in specially prepared earth pits 1.5 metre below ground level with 40Kilogramcharcoal and salt with altemate layers of charcoal and salt and G.I.pipe 40mm dia 2 meter length burried in earthe upto earthing plate remining portion above ground level for watering and refilling compete Note- Copper strip from lightning conductor is not considered in this item.										
	FOR MAIN BLDG	1	X	1	X	1.00	X				1.00
								<b>Total qty.</b>		<b>1.00 NOS</b>	

Sr. No.	Item Description	Nos			Length (M)	Breadth (M)	Height/Dept. (M)	Quantity	Units	
46	Providing and fixing in position powder coated aluminium louvered windows / ventilator of various sizes with powder coating as per detailed drawing and specifications including aluminium frames 80 x 38 mm x 1.22 mm box type, 5 mm thick sheet glass louvers, of approved quality etc. complete.	0	X	1	X	1.00	X	0.00		
								Total qty.	0.00 NOS	
47	Providing and fixing lioghtening conductor system comprising of erecting Air-Termination consisting of tubular copper rod of 25mm dia. 1.2 mm thick with multiple points head 1.2 mt. long ( Heavy Conveying material obtained from excavation including playing in layers breaking cloud dressing to the required line ka grade and section for all leads and lips from the site of excavation to the site of the AS PER ITEM NO.1	1	X	1.00	X	1.00	X	1.00		
								Total qty.	1.00 CUM	
48	Providing preconstructional antitermite treatment as per I.S. 6313 (Part-II) by treating the top surface of plinth filling at the rate of 5 litres of emulsion concentrate at 1.0 percent of clorophyrifos per square metre of surface area covering ten years guarantee on bond paper.	1	X	1.00	X	41.65	X	15.000	624.75	
	MAIN BLD							Total qty.	624.75 SQ	
49	Providing and fixing in position powder coated aluminium louvered windows / ventilator of various sizes with powder coating as per detailed drawing and specifications including aluminium frames 80 x 38 mm x 1.22 mm box type, 5 mm thick sheet glass louvers, of approved quality etc. complete.									
	V1	2	X	17	X	0.60	X	0.60	X	12.24
	V2	2	X	20	X	1.00	X	0.600	X	24.00
	V3 UP SIDE OF SHUTTER	0	X	1	X	1.30	X	0.450	X	0.00
								Total qty.	36.24 SQ	

  
**K.V. AMRUTWAD**  
 Regd. Consulting Engineer  
 R.No.State/R/2022/APL/00733

Name of Work :- CONSTRUCTION OF 1/1500 M.T. CAP.WH ANCILLARY WORKS AT GUT NO.196/A/1,GAGLEGAON TQ.BILOLI DIST.NANDED

LEADS & RATES OF MATERIAL	SOURCE	BASED ON SSR 2022-2023				CHARGES	LEAD	PAY LOAD
		UNIT	LEAD	ACTUAL	INITIAL			
			KM			DIFF.	S	
SAND		CUM	20	422.39	0.00	422.39	1.00	
METAL UPTO 40MM CRUSHED		CUM	25	489.23	0.00	489.23	1.00	
METAL ABOVE 40MM		CUM	25	468.85	0.00	468.85	1.00	
RUBBLE		CUM	5	280.93	0.00	280.93	1.00	
BRICK		CUM	25	1183.4	0.00	1183.40	1.00	
HARD MURUM/ SOFT MURUM		CUM	5	220.06	0.00	220.06	1.00	
CEMENT/STEEL		MT	10	211.04	0.00	211.04	1.00	
			NATURAL		ARTIFICIAL			
		QTY	RATE	AMOUNT	RATE	AMOUNT		
C.C.M-10 For Foundation & bedding	SAND	0.47	422.39	198.52	489.23	229.94		
	METAL	0.94	489.23	459.88	489.23	459.88		
				<b>658.40</b>		<b>689.81</b>		
P & C U.C.R. MASONARY	SAND	0.4	422.39	168.96	489.23	195.692		
	RUBBLE	1.25	280.93	351.16	280.93	351.163		
	CEMENT	1.78	0.00	0.00		0		
				<b>520.12</b>		<b>546.855</b>		
P & C .B.B.MASONARY IN Plinth & S.S	SAND	0.32	422.39	135.16				
	BRICK	0.475	1183.40	562.12				
				<b>697.28</b>				
P & L R.C.C. M-20	SAND	0.425	422.39	179.52	489.23	207.923		
	METAL	0.85	489.23	415.85	489.23	415.846		
				<b>595.36</b>		<b>623.768</b>		
P & L R.C.C. M-25	SAND	0.44	422.39	185.85	1183.40	520.696		
	METAL	0.88	489.23	430.52	1183.40	1041.39		
				<b>616.37</b>		<b>1562.09</b>		
P & A 25 MM TH PLASTER	SAND	0.024	422.39	10.14				
	METAL	0.22	489.23	107.63				
				<b>117.77</b>				
P & A 20 MM TH PLASTER	SAND	0.024	422.39	10.14				

P & F SHAHBAD FOR SILL & DADO					10.14			
	SAND		0.024		422.39			
P & C HALF BRICK WALL					10.14			
	SAND		0.036		422.39			
120 BRICK PER CUM	BRICKS		1.00		1183.40			
					1198.61			

  
**K.V. AMRUTWAD**  
 Regd. Consulting Engineer  
 R.No.State/R/2022/APL/00733

## Recovery Statement of Royalty

Name of Work :- CONSTRUCTION OF 1/1500 M.T. CAP.WH ANCILLARY WORKS AT GUT NO.196/A/1,GAGLEGAON TQ.BILOLI DIST.NANDED

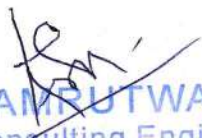
Sr.No.	PERTICULAR	REQUIRED QTY IN CUM	REQUIRED QTY IN BRASS		BALANCE QTY IN CUM	Total
			2.83			237.37/ 216.18
1	SAND	108.32	38.28		38.28	25711.92
2	METAL	260.72	92.13		92.13	56362.45
3	MURUM	305.54	107.97		107.97	66051.64
4	RUBBLE	22.49	7.95		7.95	4861.89

  
**K.V.AMRATWAD**  
 Regd:Consulting Engineer  
 No. 10/2006/100733

Name of Work :- CONSTRUCTION OF 1/1500 M.T. CAP.WH ANCILLARY WORKS AT GUT  
NO.196/A/1,GAGLEGAON TQ.BILOLI DIST.NANDED

ABSTARCT FOR MATERIAL TESTING CHARGES

SR.N O	DESCRIPTION	No.	L	B	D	QTY	QUA NTIT Y	UNIT	RATE	AMOUNT
1	<b>BRICKS</b>									
1	Water Absortion (Set Of 5 Bricks), Compressive Strength (Set Of 5 Bricks) , Efflorescences (Set Of 5 Bricks)						3.00	Per Test	2175.00	6525.00
2	<b>CONCRETE</b>									
	Comprassive Strength Of C.C. Cube. (Set Of 3 Cube)						3.00	Per Test	690.00	2070.00
	Flexural Strength Of Beam	6.00	Per Test				2.00	Per Test	745.00	1490.00
	Permiability Test	6.00	Per Test				2.00	Per Test	1540.00	3080.00
3	<b>STEEL BAR TESTING</b>									
	Up To 16mm (9 Set Of 3 Bars)						3.00	Per Test	1275.00	3825.00
	Nitrol Solution Test. (Set of 3 Bars)						3.00	Per Test	3875.00	11625.00
									<b>TOTAL</b>	<b>28615.00</b>
	<b>For road way</b>									

  
**K.V.AMRTWAD**  
Regd.Consulting Engineer  
R.No.State/R/2022/API/50003

## CERTIFICATE

This is certified that:-

- 1 100% Arithmetical check has been exercised while framing the estimate.  
The rates as adopted in the estimate are as per current. Schedule of Rates (S.S.R. 2022-23)
- 2 The Quarries of the construction materials are mentioned in the lead chart have been inspected by me. The lead of materials as mentioned in the lead chart are minimum and correct. There is no other quarry available with lead less than that mentioned in the lead chart. The materials available from quarry are good in Quality and quantity required for construction work
- 3 The lead charges of the construction materials have already been incorporate in the rates of the respective items.
- 4 The quantity of the item as worked out in estimate are based on the detail working drawing/ designs are as per site conditions. The quality of the executed item will not exceed the quantity as worked out in the estimate
- 5 The various provisions made in the estimate are technically adequate and the entire proposal is considered to be technically sound.
- 6 The layout plan and the working drawing of the proposed construction have been prepared as per bye-laws of local authority

  
K.V. ANANTWAD  
Regd. Consulting Engineer  
R.No.State/R/2022/APL/00733


Sr. No.	Item Description	Per unit Quantiy	Lead charges Rs.per unit	Total Amount in Rs.	Units
9	Providing and laying Cast in situ/Ready Mix cement concrete M-20 of trap/ granite / quartzite/ gneiss metal for R.C.C. slabs and landings as per detailed designs and drawings including steel centering, formwork, cover blocks, laying/pumping, compaction finishing the formed surfaces with cement mortar 1:3 of sufficient minimum thickness to give a smooth and even surface or roughening if special finish is to be provided and curing etc. complete,(Excluding reinforcement and structural steel).with fully automatic micro processor based PLC with SCADA enabled reversible Drum Type mixer/ concrete Batch mix plant (Pan mixer) etc. complete. With fine aggregate (Natural Sand / Crushed sand VSI Grade finely washed etc)(Item No.25.70 BDF 8 Page.No.236)			13932.00	
	A)Ground Floor-Rate as per SSR 2022-2023			126.00	
	Deduct 126 rupees For Scada				
			Total	13806.00	
	B)Deduct Royalty charges of sand	0.425	237.37	100.88	
	C) Sub Total		C=A-B	13705.12	
	D) Add Lead Charges			0.00	
	i) Metal	0.85	464.23	394.60	
	ii) Sand	0.43	402.39	171.02	
	iii) Cement	7.00	10.75	75.27	
	<b>Total</b>			<b>14346.00</b>	<b>Cum</b>
10	Providing and laying Cast in situ/Ready Mixcement concrete M-20 of trap/ granite/ quartzite/ gneiss metal for R.C.C. chajja as per detailed design and drawings including steel centering, formwork, cover blocks, laying/pumping, compacting and roughening the surface if special finish is to be provided and curing complete. (Excluding reinforcement and structural steel). with fully automatic micro processor based PLC with SCADA enabled reversible Drum Type mixer/ concrete Batch mix plant (Pan mixer) etc. complete. With fine aggregate (Natural Sand / Crushed sand VSI Grade finely washed etc)(Item No.26.05 BDF 9 Page.No.239)			13932.00	
	A)Ground Floor-Rate as per SSR 2022-2023			126.00	
	Deduct 126 rupees For Scada				
			Total	13806.00	
	B)Deduct Royalty charges of sand	0.425	237.37	100.88	
	C) Sub Total		C=A-B	13705.12	
	D) Add Lead Charges			0.00	
	i) Metal	0.85	464.23	394.60	
	ii) Sand	0.43	402.39	171.02	
	iii) Cement	7.00	0.00	0.00	
	<b>Total</b>			<b>14270.73</b>	<b>Cum</b>
11	Providing & fixing in position T.M.T.bar reinforcement of various diameters for reinforced cement concrete pile caps, footing, foundation, slabs, beams, columns, canopies, stair case, newels, chajjas, lintels, pardis, copings, fins, arches -etc. complete .(Item No.26.33, BDF 17A Page.No.245)			89703.00	
	A)Ground Floor-Rate as per SSR 2022-2023			0.00	
	B) Add Lead Charges				

Sr. No.	Item Description	Per unit Quantiy	Lead charges Rs.per unit	Total Amount in Rs.	Units
	i) Steel	1.00	201.04	201.04	
	<b>Total</b>			<b>89904.04</b>	<b>M.T.</b>
12	Providing masonry with conventional/ Indian standard type bricks in c.m. 1:6 in foundation and plinth –etc. complete. (Item No.27.03 BDG 1 Page.No.254)			7514.00	
	A)Ground Floor-Rate as per SSR 2022-2023	0.32	237.37	75.96	
	B)Deduct Royalty charges of sand		C=A-B	7438.04	
	C) Sub Total			0.00	
	D) Add Lead Charges				
	i) Brick	1.00	579.20	579.20	
	ii) Sand	0.32	402.39	128.76	
	iii) Cement	1.58	10.75	16.99	
	<b>Total</b>			<b>8163.00</b>	<b>Cum</b>
13	Providing second class Burnt Brick masonry with conventional/ I.S. type bricks in cement mortar 1:6 in superstructure including striking joints, raking out joints, watering and scaffolding etc. Complete.(Item No.27.05 BDG 1 Page.No.254)			7994.00	
	A)Ground Floor-Rate as per SSR 2022-2023	0.32	237.37	75.96	
	B)Deduct Royalty charges of sand		C=A-B	7918.04	
	C) Sub Total			0.00	
	D) Add Lead Charges				
	i) Brick	1.00	579.20	579.20	
	ii) Sand	0.32	402.39	128.76	
	iii) Cement	1.58	10.75	16.99	
	<b>Total</b>			<b>8643.00</b>	<b>Cum</b>
14	Providing sand faced plaster externally in cement mortar using approved screened sand, in all positions including base coat of 15 mm thick in cement mortar 1:4 using waterproofing compound at 1 kg per cement bag curing the same for not less than 2 days and keeping the surface of the base coat rough to receive the sand faced treatment 6 to 8 mm thick in cement mortar 1:4 finishing the surface by taking out grains and curing for fourteen days scaffolding etc.complete.(Item No.32.11 BDG 7 Page.No.269)			639.00	
	A)Ground Floor-Rate as per SSR 2022-2023	0.015	237.37	3.56	
	B)Deduct Royalty charges of sand		C=A-B	635.44	
	C) Sub Total			0.00	
	D) Add Lead Charges				
	i) Sand	0.02	235.38	3.53	
	ii) Cement	0.11	10.75	1.18	
	<b>Total</b>			<b>640.15</b>	<b>Sqm</b>
15	Providing internal cement plaster 12 mm. thick in single coat in cement mortar 1:5 without neeru finish to concrete or brick surfaces etc.complete. (Item No.32.03 BDL 2 Page.No.268)			271.00	
	A)Ground Floor-Rate as per SSR 2022-2023	0.015	237.37	3.56	
	B)Deduct Royalty charges of sand		C=A-B	267.44	
	C) Sub Total			0.00	
	D) Add Lead Charges				
	i) Sand	0.02	235.38	3.53	
	ii) Cement	0.11	10.75	1.18	
	<b>Total</b>			<b>272.15</b>	<b>Sqm</b>

Sr. No.	Item Description	Per unit Quantity	Lead charges Rs.per unit	Total Amount in Rs.	Units
16	Providing and fixing rolling shutter fabricated from steel laths of minimum thickness 0.9 mm with lock plate of 3.15 mm thickness reinforced with 35 x 35 x 5 mm angle section fitted with sliding bolts and handles for both sides, deep M.S. channel section of depth and thickness not less than 65 mm and 3.15 mm respectively with hold fast arrangements, M.S. Bracket plate 300 x 300 x 3.15 mm minimum size and shape with square bar, suspension shaft of minimum 32 mm diameter, hood cover of M.S. sheet not less than 0.9 mm thickness and of any size at top and safety devices including mechanical gear operation arrangement consisting of worm gear wheels and worms of high grade cast iron or mild steel and one coat of red lead primer etc. complete. (I.S. 62481979) (Without mechanical gear)(Item No.39.24 BDT Page.No.318)				
	A)Ground Floor-Rate as per SSR 2022-2023			67.00	
	B)Deduct Royalty charges of sand	0.015	237.37	3.56	
	C) Sub Total		C=A-B	63.44	
	D) Add Lead Charges			0.00	
	i) Sand	0.02	235.38	3.53	
	ii) Cement	0.11	10.75	1.18	
	<b>Total</b>			<b>68.15</b>	<b>Sqm</b>
17	Providing and fixing mild steel grill work for windows, ventilators etc. 20 kg/sqm as per drawing including fixtures, necessary welding and painting with one coats of anticorrosive paint and two coats of oil painting complete (Item No.40.01 BDU 1 Page.No.338)				
	A)Ground Floor-Rate as per SSR 2022-2023			2097.00	
	<b>Total</b>			<b>2097.00</b>	<b>Sqm</b>
18	Providing and fixing in position. (as per I.S.1868 / 1982) Aluminium sliding window of two tracks with rectangular pipe having overall dimension 63.50 x 38.10 x 1.02 mm at weight 0.547 kg/Rmt. and window frame bottom track section 61.85 x 31.75 x 1.20 mm at weight 0.695 kg/Rmt. Top and side track section 61.85 x 31.75 x 1.30 mm at weight 0.659 kg/Rmt. The shutter should be of bearing bottom 40 x 18 x 1.25 mm at weight 0.417 kg/Rmt. Inter locking section 40 x 18 x 1.10 mm at weight 0.469 kg/Rmt. And handle section 40 x 18 x 1.25 mm at weight 0.417 kg/Rmt. and top section 40 x 18 x 1.25 mm at weight 0.417 kg/Rmt. As per detailed drawings and as directed by Engineer in charge with all necessary Aluminium sections fixtures and fastenings such as roller bearing in nylon casting and self locking catch fitted in vertical section of shutter including 5 mm thick plain glass with all required screws and nuts etc, complete. With powder coating with box (Item No.39.39 RNT Page No 322)				
	A)Ground Floor-Rate as per SSR 2022-2023			4794.00	
	<b>Total</b>			<b>4794.00</b>	<b>Sqm</b>
19	Providing and applying three coats of water proof cement paint of approved manufacture and of approved colour to new plastered surfaces including scaffolding if necessary, cleaning and preparing the surface, watering for two days etc. complete. (Item No.35.15 , Page.No.287)				
	A)Ground Floor-Rate as per SSR 2022-2023			104.00	
	<b>Total</b>			<b>104.00</b>	<b>Sqm</b>

212

Sr. No.	Item Description	Per unit Quantity	Lead charges Rs.per unit	Total Amount in Rs.	Units
20	Providing and applying washable oil bound distemper of approved colour and shade to old and new two coats, including scaffolding if necessary, cleaning and preparing the surface complete. Complete (I.No.36.11,,p.no.291) item code- BDp5A-p.no.413 A)Ground Floor-Rate as per SSR 2022-2023			48.00	
	<b>Total</b>			<b>48.00</b>	<b>Sqm</b>
21	providing and fabricating structural steel work in rolled sections, fixed with connecting plates or angle cleats in main and cross beams, hip and jack rafters, purlins connecting to truss members and the like, as per detailed designs and drawing or as directed including cutting, fabricating, hoisting, erecting, fixing in position, making riveted/ bolted/ welded connections and one coat of anticorrosive paint and over it two coats of oil paintig complete.Bd.c.3 page No.275,( I.No.23.01,P.no.223) A)Ground Floor-Rate as per SSR 2022-2023			101844.00	
	<b>Total</b>			<b>101844.00</b>	<b>Sqm</b>
22	Providing and fixing plain zinc sheeting of 0.80 mm thick (22 B.W.G.) over the ridge hip or valley to galvanized iron sheet roofing including all fastening and bolt galvanised iron screws and bolts, lead and bitumen washers etc. complete.(Weight of 6.8 kg/sq.m.). (I.No.38.05,P.No.297) A)Ground Floor-Rate as per SSR 2022-2023			1139.00	
	<b>Total</b>			<b>1139.00</b>	<b>Sqm</b>
23	Providing and fixing H.D.P container Syntex or alike one piece moulded water tank made out of low density polythylar and built corrugation including of delivery up to destination hoisting and fixing of accessories such as inlet, outlet overflow of all tanks capacity above 1000 to 20,000 litres A)Ground Floor-Rate as per SSR 2022-2023			13.00	
	<b>Total</b>			<b>13.00</b>	<b>lit</b>
24	Providing and fixing on walls/ ceiling/ floor 32mm dia. CPVC pipe with necessary fittings, remaking good the demolished portion etc. complete. Including removing existing pipe line if necessary and conveying and stacking the same in PWD chowky or as directed etc. complete. A)Ground Floor-Rate as per SSR 2022-2023			584.00	
	<b>Total</b>			<b>584.00</b>	<b>lit</b>
25	Providing and fixing on walls/ ceiling/ floor 25 mm dia. CPVC pipe with necessary fittings, remaking good the demolished portion etc. complete. Including removing existing pipe line if necessary and conveying and stacking the same in PWD chowky or as directed etc. complete. A)Ground Floor-Rate as per SSR 2022-2023			262.00	
	<b>Total</b>			<b>262.00</b>	<b>lit</b>

  
**K.V. AMRUTWAD**  
B.E. (Civil)  
CONSULTING ENGINEER  
R.No.TP/NWCMC/ENGG/44

## LEAD CHART

Sr. No.	Material	Source	Total lead in km	Initial lead	Net lead	Net charges	
1	Sand		20	20	422.39	402.39	
2	c.r.metal		25	25	489.23	464.23	
3	40 mm above metal		25	25	468.85	443.85	
4	Murum	Local	5	5	280.93	275.93	
5	Brick		25	25	1183.4	579.20	
6	Cement	LOCAL	5	5	220.06	215.06	10.75
7	Steel	LOCAL	10	10	211.04	201.04	
8	Flooring (Tiles)	LOCAL	0	0	0	0	
9	Flooring (Tandur, Granite)	LOCAL	0	0	0	0	

certified that the lead of the quarries accounted in the estimate as per the nearest route is considered. Lead of the quarry account in the estimate are authentic leads which is to be government approved.



**K.V. AMRUTWAD**  
B.E. (Civil)  
CONSULTING ENGINEER  
R.No. TP/NWCMC/ENGG/44

Name of Work : CHANDRAGUPTA MORYA FARMER PRODUCER COMPANY LTD GAGLEGAON Estimate prepared for Construction of Shed For Daal Mill Plant At- GAGLEGAON GUT.NO 196/A/1 TQ.BILOLI Dist.Nanded

### QUARRY CHART

	100 KM
	90 KM
	80 KM
	70 KM
	60 KM
	50 KM
	40 KM
	30 KM
	25 KM
	20 KM
	15 KM
	10 KM

#### CERTIFICATE

Certificated that I have visited the quarry sites & distance shown as lead is corrects & sufficient quantity will be available from quarry.



**K.V. AMRUTWAD**  
B.E. (Civil)  
CONSULTING ENGINEER  
R.No.TP/NWCMC/ENGG/44

### Recovery Statement of Royalty

Name of Work : CHANDRAGUPTA MORYA FARMER PRODUCER COMPANY LTD GAGLEGAON Estimate prepared for Construction of Shed For Daal Mill Plant At- GAGLEGAON GUT.NO 196/A/1 TQ.BILOLI Dist.Nanded

Sr.No.	Item	Qty. Estimated	Consumption				Royalty charges Rs.237.37/cum			Total	
			Sand		Stone		Murum /Cum	Sand	Stone		Murum
			Per cum /sqm	Total	Per cum /sqm	Total					
3	Filling in plinth and floors with contractors soil ,sand or murum in 15cm to20cm (Item No.21.37 BDA 11 Page.No.201)	83.60	1						12059.99	12059.99	
4	Providing and laying in situ cement concrete in 1:3:6 of trap/ granite /quartzite /gneiss metal for foundation and bedding --- etc. complete. (Item No.24.01 BDE 1B Page.No.226)	3.02	0.47	1.42			224.97	0.00		224.97	
5	Providing and laying in situ. Cement concrete M-15/1:2:4 of trap/granite/quartzite/gneiss metal for foundation and bedding including bailing out water manually , formwork, compacting, curing etc. complete. Bd.E.1 Page No.287 (L.no.24.16, p.no.229)	18.58	0.445	8.27			1308.59	0.00		1308.59	
6	Providing and laying insitu c.c. M-20 of trap/ for footing ..etc.complete.	4.31	0.425	1.83			289.36	0.00		289.36	
7	Providing and casting in situ cement concrete M-20 of trap/ geanite /quartzite gneiss metal for reinforced -cement concrete columns - etc. complete.	6.47	0.425	2.75			435.20	0.00		435.20	
8	Providing and casting in situ cement concrete M- 20 of trap/ quartzite/ gneiss metal for reinforced cement concrete beams and lintels ....etc complete. (Excluding reinforcement )(8.50 bag/cum)(Item No.25.50 BDF 6A Page.No.234)	3.90	0.425	1.66			262.36			262.36	
9	Providing and laying Cast in situ/Ready Mix cement concrete M-20 of trap/ granite / quartzite/ gneiss metal for R.C.C. slabs and landings as per detailed designs and drawings including steel centering, formwork, cover blocks, laying/pumping, compaction finishing the formed surfaces with cement mortar 1:3 of sufficient minimum thickness to give a smooth and even surface or roughening if special finish is to be provided and curing etc. complete.(Excluding reinforcement and structural steel).with fully	0.83	0.425	0.35			55.70			55.70	

### Recovery Statement of Royalty

Name of Work : CHANDRAGUPTA MORYA FARMER PRODUCER COMPANY LTD GAGLEGAON Estimate prepared for Construction of Godown For Daal Mill Plant At-

Sr.No.	Item	Qty. Estimated	Consumption				Royalty charges Rs.237.37/cum			Total
			Sand		Stone	Murum /Cum	Sand	Stone	Murum	
			Per cum /sqm	Total						
10	Providing and laying Cast in situ/Ready Mixcement concrete M-20 of trap/ granite/ quartzite/ gneiss metal for R.C.C. chajja as per detailed design and drawings including steel centering, formwork, cover blocks, laying/pumping, compacting and roughening the surface if special finish is to be provided and curing complete. (Excluding reinforcement and structural steel). with fully automatic micro processor based PLC with SCADA enabled reversible Drum Type mixer/ concrete Batch mix plant	1.28	0.425	0.54			85.98			85.98
12	Providing second class burnt brick masonry with conventional/ Indian standard type bricks in cement mortar 1:6 in plinth including striking joints-etc. complete.	6.56	0.32	2.10			332.35			332.35
13	Providing second class Burnt Brick masonry with conventional/ I.S. type bricks in cement mortar 1:6 in superstructure including striking joints, raking out joints, watering and scaffolding etc.	25.31	0.32	8.10			1281.98			1281.98
14	Providing sand faced plaster externally in cement mortar using approved screened sand, in all positions including base coat of 15 mm thick in cement mortar 1:4 using waterproofing	186.23	0.02	3.72			589.58			589.58
15	Providing internal cement plaster 12 mm. thick in single coat in cement mortar 1:5 without neeru finish to concrete or brick surfaces etc.complete. (Item No.32.03 BDL 2 Page.No.268)	161.84	0.02	3.24			512.34			512.34
			33.98	237.37			83.60	216.18		
							18072.44			
										26138.64

  
**K.V. AMRUTWAD**  
 B.E. (Civil)  
 CONSULTING ENGINEER  
 R.No.TP/NWCMC/ENGG/44

# CERTIFICATE

This is certified that:-

- 1 100% Arithmetical check has been exercised while framing the estimate.  
The rates as adopted in the estimate are as per current. Schedule of Rates (S.S.R. 2022-23)
- 2 The Quarries of the construction materials are mentioned in the lead chart have been inspected by me. The lead of materials as mentioned in the lead chart are minimum and correct. There is no other quarry available with lead less than that mentioned in the lead chart. The materials available from quarry are good in Quality and quantity required for construction work
- 3 The lead charges of the construction materials have already been incorporate in the rates of the respective items.
- 4 The quantity of the item as worked out in estimate are based on the detail working drawing/ designs are as per site conditions. The quality of the executed item will not exceed the quantity as worked out in the estimate
- 5 The various provisions made in the estimate are technically adequate and the entire proposal is considered to be technically sound.
- 6 The layout plan and the working drawing of the proposed construction have been prepared as per bye-laws of local authority



**K.V. AMRUTWAD**  
B.E. (Civil)  
CONSULTING ENGINEER  
R.No.TP/NWCMC/ENGG/44

**SPECIFICATION**

STRUCTURE R.C.C.FRAMED  
 S. STRUCTURE B.B.MASONRY  
 TRUSS M.S.TRUSS  
 PLASTERING 12MMTHICK1.5 PROP

**AREA STATEMENT**

AREA OF SHED - 185.87 SQ.M.

**DESCRIPTION OF PROPOSAL**

PROPOSED PLAN FOR:-Construction of Shed For Daal Mill Plant G.NO.196/A/1 AT-GAGLEGAON TQ.BILOLI ,Dist.Nanded

SCALE - 1:100 SQ.M.

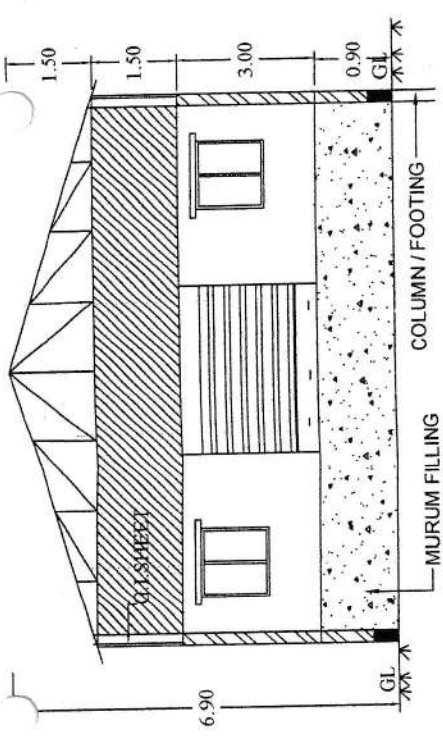
**K.V. AMRUTWAD**  
 B.E. (CIVIL)  
 CONSULTING ENGINEER  
 R.No. TP/IN/MC/JENG/94

*(Signature)*

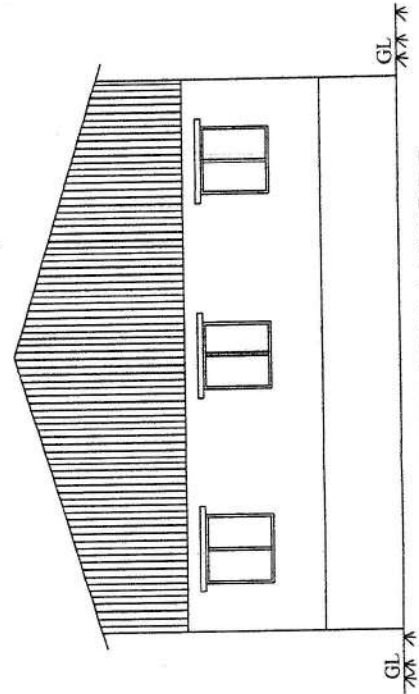
SIGN. OF OWNER SIGN. OF ENGINEER

**" OM ASSOCIATES "**

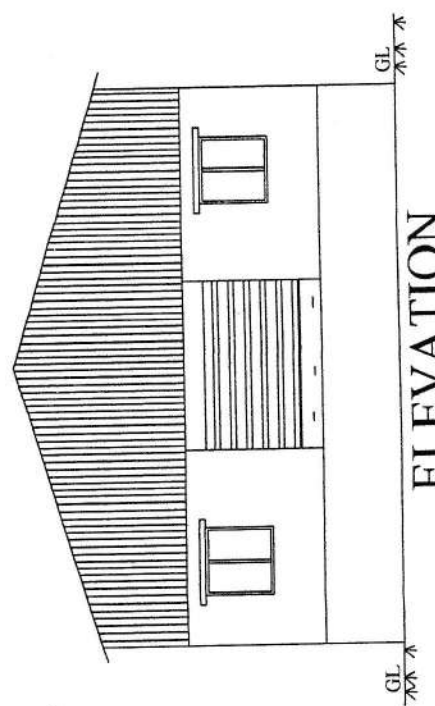
RAJAI ENCLAVE, WAMAN NAGAR,  
 PURNA ROAD, NANDED.  
 MOBILE NO. 9423140573



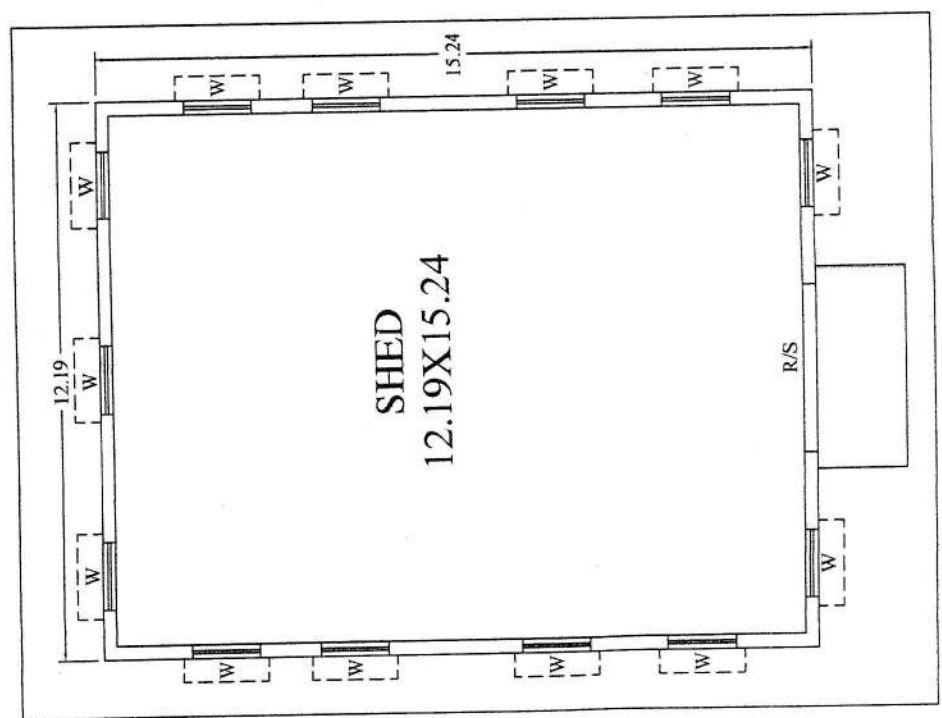
**SECTION A'A**



**RARE ELEVATION**



**ELEVATION**



**SHED**  
 12.19X15.24

**GROUND F. PLAN (1:100)**